



KONICA MINOLTA

**Black & White Office System Di470**



Di470

# **The office scrooge**

**“Take of the pennies and the pounds will take of themselves.” This well-known saying still holds true in today’s office environment. Take, for example, the cost of producing business documents. Many businesses now realise that the on-going costs of document production ultimately weigh more heavily than the initial cost of purchasing an output device.**

**The penny has dropped that total cost of ownership (TCO) is the key factor. And in TCO terms, Konica Minolta’s new monochrome output station, the 47-ppm Di470, is a real miser.**

**Designed to cope with the punishing demands of departmental document production, the Di470 offers proven reliability and user friendliness combined with highly attractive hardware and running costs. Not surprisingly they’re already calling it “the office scrooge”.**



### How you benefit

- Attractive TCO
- Good reliability record
- Easy to operate



# A penny saved is a penny earned



Desktop devices are fine for printing out e-mails or smallish Word documents. But if the print jobs are any bigger, it makes sound business sense to use a department-sized device. The Di470 is just such a departmental output station. It'll not only have a penny-pinching impact on a department's document production costs but can also bring a boost to productivity with a wide range of attractive features such as duplex printing, sorting, punching, stapling and folding. Pennies don't fall from heaven – but you can improve your bottom line by saving on printing costs.



## Lower printing costs

“In for a penny, in for a pound” – the decision to invest in a departmental document production device can have long-lasting consequences, especially if the running costs get out of hand. In the case of the miserly Di470, you not only benefit from an attractive purchase price but also profit from reduced running costs. And that all adds up to an excellent TCO.



## Reliable operation

The Di470 is not only an extremely fast departmental output station, it is also a very reliable device. Although 47 pages per minute, in itself, is an impressive performance for a departmental device, the Di470's maximum monthly output volume of 85K is an even more significant figure.



## Improved user friendliness

Konica Minolta's already high standards of user friendliness have been bettered once again in the Di470. Besides such acknowledged features as easy-to-handle paper cassettes and straight-forward panel design, the Di470 also has a tiltable panel and high-contrast display for enhanced ease of use.

# Penny-wise preparation and production

Ease of operation and a paper management concept geared to departmental needs will save office users time and effort and a business money in preparing documents for production.

## → User-friendly operation

You don't need professional-style skills to use a Di470 because this output station is designed for the average departmental user. Practical highlights include a large touch-screen panel, systematically arranged buttons, supportive explanations, tiltable operating panel and trouble-shooting instructions. The printer driver was also designed to be easy to use and the whole print job management process can be controlled from the user's desktop.

## → Progressive paper management

Ease of operation is matched by a paper-management concept designed with corporate environments in mind. With a maximum paper capacity of 6,550 sheets this output station won't need frequent refilling and departmental users will appreciate such versatile paper-handling features as six-way loading, input media of up to 160 g/m<sup>2</sup> and paper formats of up to A3.

### How you benefit

- Simple to use
- Voluminous paper capacity
- Versatile paper handling





## → Convenient network printing

You can easily turn the Di470 into a networked printer to bring the benefits of multiple-set printing to networked departmental users. At the same time, the secure printing function enables users to lock a job so that it can only be accessed through a given code. The Di470 also comes with PageScope Net Care, the Konica Minolta tool that makes printer network administration easier.

## → Sophisticated scanning

Departmental users have varying scanning requirements. The Di470 can meet them: convenience in office communication through scan-to-eMail, flexibility in job building with scan-to-HDD, efficiency in archiving with scan-to-FTP and network TWAIN scanning.

## → More flexible copying

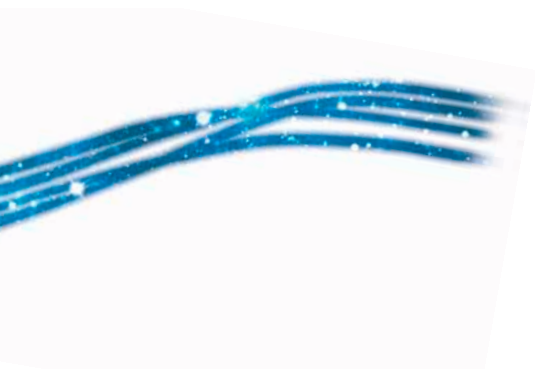
When used as a digital copier, the Di470 can help reduce paper and toner consumption through 2-in-1 or 4-in-1 copying while 90° image rotation makes crosswise copying possible and reduces the number of “miscopies”. Digital copiers also give you more creative possibilities, e.g. 25 – 400% magnification in 0.1% steps, seven pre-set zoom ratios and stamping of dates, distribution numbers or watermarks such as “Confidential” or “Draft”.

## How you benefit

- Easy networking
- Departmental scanning
- Economical, creative copying

**Printing, copying or scanning – whatever your document-production needs, the Di470 guarantees a job well done.**





Even the average office user will frequently want more than mere document production from a departmental output station. The Di470 offers such “added value” with a range of extremely useful finishing options available.

# Anything but miserly finishing ...



## ➔ Intelligent output

With a finishing capacity of 3,250 sheets the Di470 offers virtually unlimited online functionality – even for large departments. The optional mail-bin finisher, for example, is a big help in ensuring user-specific output and the criss-cross sorting function makes sure individual sets are clearly separated.

## ➔ Folding finesse

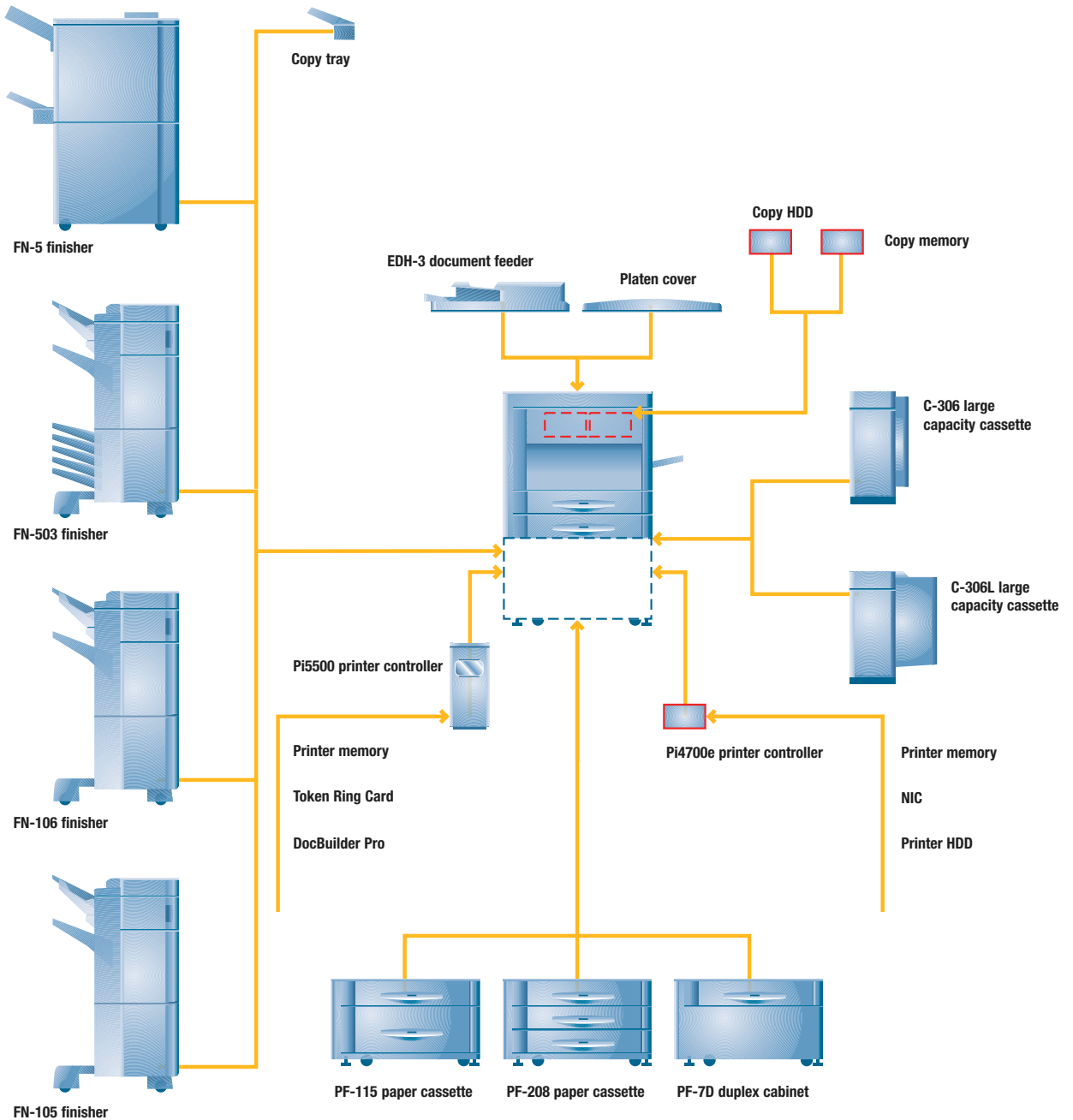
Besides sorting, stapling and punching, the Di470 has two other extremely useful finishing functions. Half-fold is a prerequisite for online booklet-making while the Z-fold function is ideal for reducing A3 documents to A4 format so they fit into a normal binder.

## How you benefit

- Wide range of finishing options
- Full-speed finishing
- Online finishing functionality

# ... and accessories

The modular design of the Di470 is geared to the differing demands of departmental users and varying office workflows. So you can be sure of the configuration your department needs.





KONICA MINOLTA

### Copier specifications

**Copy speed A4**  
Up to 47 copies/min.

**Copy speed A3**  
Up to 28 copies/min.

**Copy resolution**  
Max. 600 x 600 dpi

**1st copy**  
Less than 4 sec. (A4 crosswise)

**Gradations**  
256 gradations

**Magnification**  
25% – 400% in 0.1% steps

**Multiple copy**  
1 – 999, countdown, interruption mode

**Copy memory**  
Standard: 32 MB  
Max.: 64 MB

**Copier HDD**  
20 GB (optional)

**Copy features**  
Booklet creation  
Cover/chapter insertion  
Image rotation  
Watermark  
Multi-up  
Stamp function

### Printer specifications (optional)

**Print speed A4**  
Up to 47 prints/min.

**Print speed A3**  
Up to 28 prints/min.

**Print resolution**  
Max. 600 x 600 dpi

**Page description language**  
PCL 5e, PCL 6, PS 3

### Interface

Parallel (IEEE1284)  
Ethernet (10/100Base-T)  
Wireless Ethernet (IEEE 802.11b)  
Token Ring (Pi5500 only)

### Print memory

Standard: 32 MB  
Max.: 160 MB

### Printer HDD

10 GB

### Operating system

Windows 95/98/2000/ME/XP/NT4.0  
Mac OS 7.5.3 or higher  
Linux (e.g. Red Hat, Caldera, SuSE)  
Unix (e.g. Solaris, HP-UX, IBM-AIX)

### Other environments

SAP, AS400 / OS400

### Print features

Secure printing  
Variable data printing (Fiery FreeForm)  
Page impositioning (Fiery DocBuilder/Pro)

### Scanner specifications (optional)

#### Scan speed

Up to 50 scans/min.

#### Scan resolution

Max. 600 x 600 dpi

#### Scan modes

TWAIN scan  
Scan-to-HDD  
Scan-to-eMail  
Scan-to-FTP (Pi4700e only)  
Scan-to-URL

#### Scan features

Electronic document handling (PageScope Cabinet)

### System specifications

**Automatic document feeder**  
Max. 100 sheets (optional)

#### Output paper size

A6 to A3

#### Paper weight

60–160g/m<sup>2</sup>

#### Paper input capacity

Standard: 1,050 sheets  
Max.: 6,550 sheets

#### Sheet bypass

Multi-bypass tray (up to 50 sheets)

#### Duplex

Standard

#### Output capacity

Max. 3,250 sheets

#### Finishing modes (optional)

Sorting  
Duplex  
Stapling  
Punching  
Folding (Z-fold, half fold)

#### Warm-up time

Less than 99 sec.

#### Cost accounting (optional)

Printer driver  
Accounting software  
Coin&Card system  
PageScope Net Care  
Accounting Plug-in

#### Device management (optional)

PageScope Net Care/Light  
Plug-ins for Unicenter TNG / Tivoli  
NetView / Microsoft Management Console / HP OpenView

#### System dimensions (WxDxH, mm)

664 x 770 x 1,032

#### System weight

Approx. 113 kg

All specifications relating to paper capacity refer to A4-sized paper of 80 g/m<sup>2</sup> quality. All specifications relating to scanning, copying or printing speeds refer to A4-sized paper that is scanned, copied or printed crosswise in multipage, simplex mode. The memory capacities listed refer to A4-sized paper with the toner coverage detailed in the respective foot note. Some of the product illustrations contain optional accessories.

Konica Minolta does not warrant that any prices or specifications mentioned will be error-free. Specifications are subject to change without notice. All other brand and product names may be registered trademarks or trademarks of their respective holders and are hereby acknowledged.

Printed in Germany on chlorine-free bleached paper. 51012047000/05-04/Kuthal

Your Konica Minolta Business Solutions Partner:



Konica Minolta  
Business Solutions Europe GmbH  
Europaallee 17 · D-30855 Langenhagen  
Tel.: +49 (0) 511 74 04-0  
Fax: +49 (0) 511 74 10 50

